

Birse Parish Deer Management Group (BP DMG)

REPORT ON DEER MANAGEMENT 2016-17

CONTENTS

Introduction

Map of DMG Area and Deer Management Units

Part One Description of the Cull in 2016-17

- 1 Overall Cull Totals
- 2 Red Deer Cull
- 3 Roe Deer Cull
- 4 Culls by Deer Management Zones
- 5 Interim Cull Totals
- 6 SNH Authorisations
- 7 Carcase Weights

Part Two Targets for the Cull in 2017-18

- 8 Overall Cull in 2016-17
- 9 Red Deer Cull Targets 2017-18
- 10 Roe Deer Cull Targets 2017-18
- 11 Overall Cull Targets 2017-18

BIRSE PARISH DEER MANAGEMENT GROUP

Report on Deer Management 2016-17

Introduction

The Birse Parish Deer Management Group (BP DMG) involves all the properties over 100 ha within the DMG area. The members are Ballogie, Finzean and Birse Estates, Birse Community Trust (BCT), Balfour Estate and the Shannel.

The DMG area covers the civil parish of Birse and the adjoining Carlogie area, as outlined on the map on the next page. The DMG area is approximately 13,387 hectares or 33,080 acres.

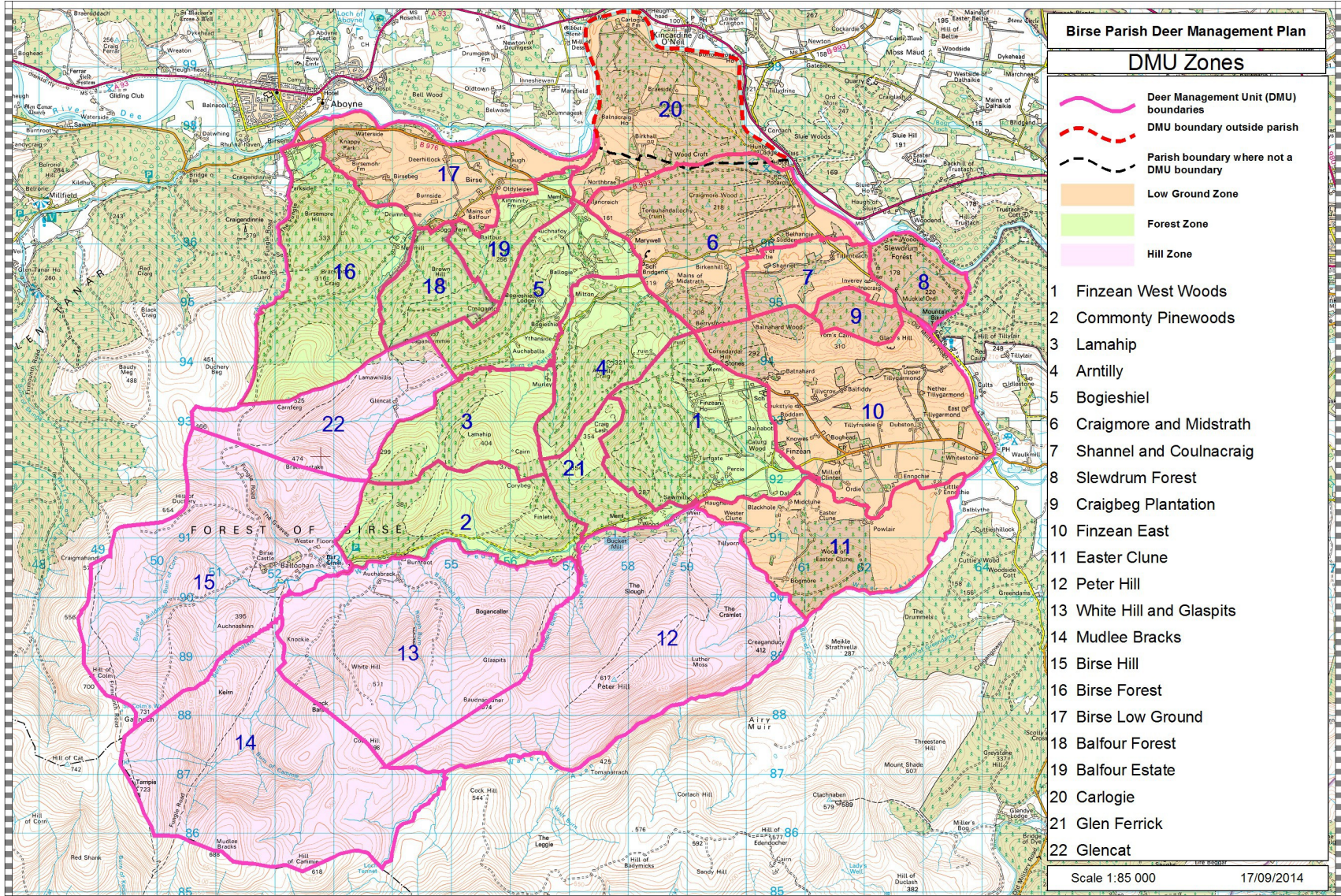
The production of this annual cull report is part of implementing the Birse Parish Deer Management Plan 2014-17.. The purpose of the report is to inform BP DMG discussions about:

- (a) the DMG's red and roe deer culls in the previous year (2016-17);
- (b) the DMG's red and roe deer cull targets in the coming year (2017-18)

The Group's Deer Management Plan and annual reports since 2012-13, are on the Birse Community Trust website with other BP DMG papers at: <http://www.birsecommunitytrust.org.uk/Local%20Notice%20Board/rep4Other.html>

The DMG area is divided into 22 Deer Management Units (DMUs), as shown on the map on the next page. The DMUs are allocated to one of three zones, depending on their character (low ground, forest, hill). There are:-

- 5 hill DMUs covering 5,546 ha (c.40% of DMG area)(average c.1,100 ha ea.)
- 9 forest DMUs covering 3,929 ha (c.30% of DMG area)(average c.450 ha ea)
- 8 low ground DMUs covering 3,912 ha (c.30% of DMG area)(av. c.500 ha ea)



PART ONE - DESCRIPTION OF THE CULL IN 2016-17

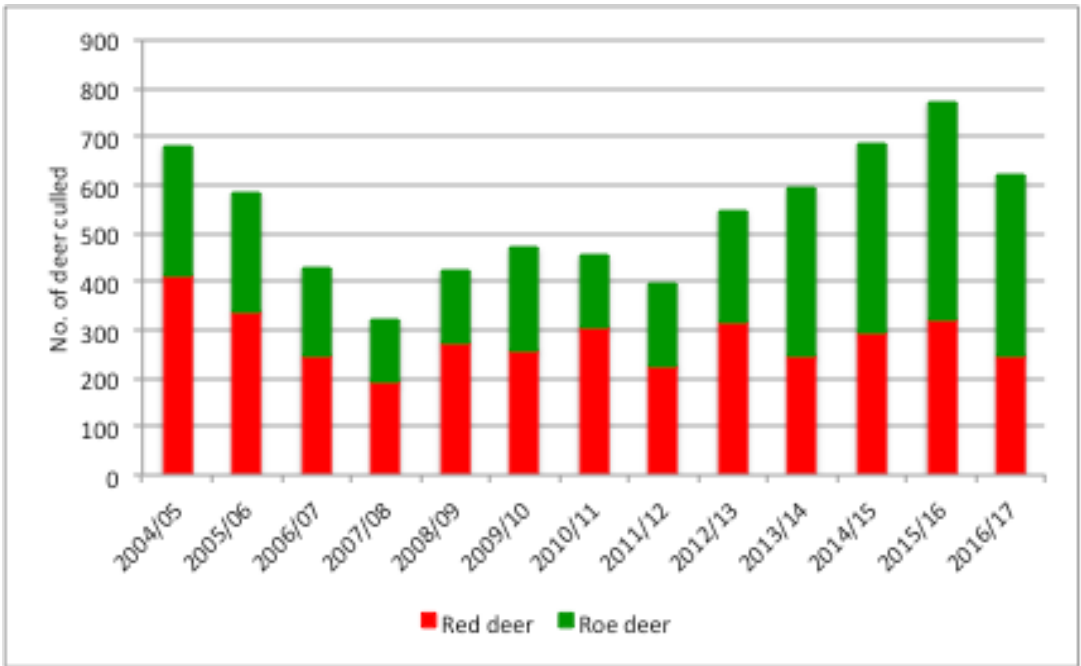
1 Overall Total Culls

The total red and roe culls in the DMG area in 2016-17 are shown in Table 1 and Figure 1 below. The contributions of the six DMG Members to the total red and roe culls are shown in Table 2 on the next page. Fig.2 then shows the patterns of the annual culls by the four main DMG Members.

Table 1: Total Culls of Red and Roe Deer

	RED	ROE	Total Cull	Red : Roe %
2004-05	415	267	682	61 : 39
2005-06	340	245	585	58 : 42
2006-07	246	184	430	57 : 43
2007-08	191	133	324	59 : 41
2008-09	276	150	426	65 : 35
2009-10	260	212	472	55 : 45
2010-11	304	152	456	67 : 33
2011-12	226	171	397	57 : 43
2012-13	315	234	549	57 : 43
2013-14	248	347	595	42 : 58
2014-15	300	390	690	43 : 57
2015-16	320	458	778	41 : 59
2016-17	249	371	620	40 : 60

Figure 1: Total Culls of Red and Roe Deer



**Birse Parish Deer Management Group
(BP DMG)**

Table 2 Red and Roe Deer Cull Totals 2004/05 - 2016/17 ¹

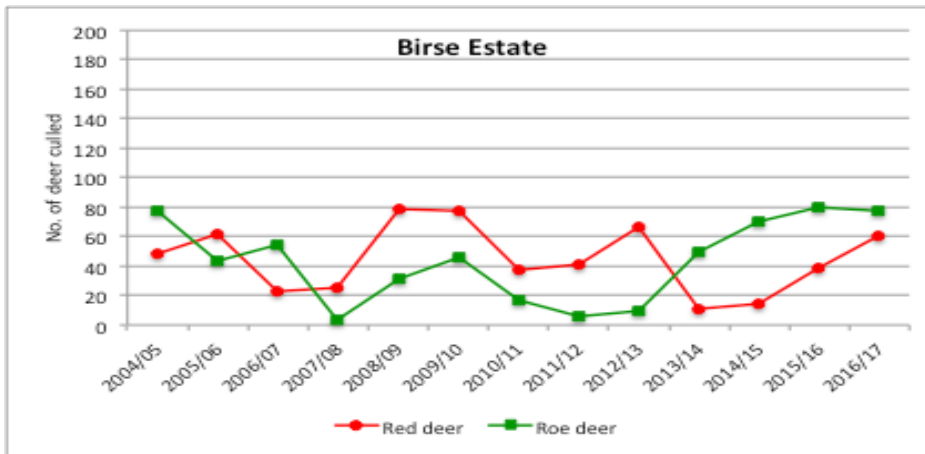
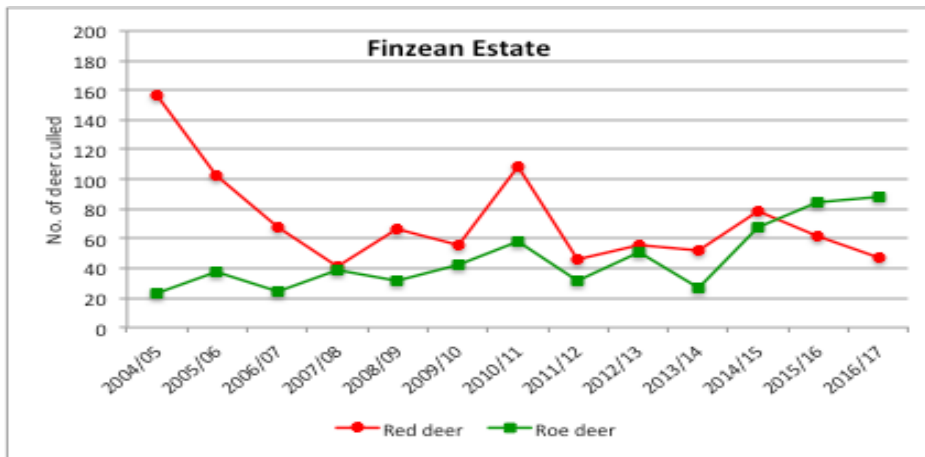
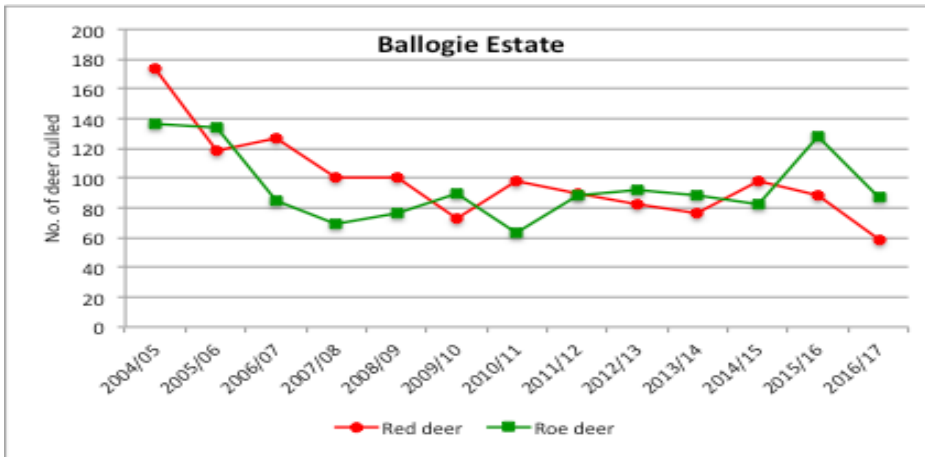
	Ballogie Estate <i>(DMUs 3,4,5,6,13,14,20)²</i> 5,020 ha			Finzean Estate <i>(DMUs 1,9,10,11,12,21)</i> 3,978 ha			Birse Estate <i>(DMUs 15,16,17,22)</i> 3,039 ha			BCT <i>(DMUs 2,8,18)</i> 936 ha			Shannel+Balfour Est. <i>(DMUs 7 +-19)</i> 419 ha			BP DMG Area <i>(DMUs 1-22)</i> 13,382 ha		
<i>Year</i>	<i>Red</i>	<i>Roe</i>	<i>Total</i>	<i>Red</i>	<i>Roe</i>	<i>Total</i>	<i>Red</i>	<i>Roe</i>	<i>Total</i>	<i>Red</i>	<i>Roe</i>	<i>Total</i>	<i>Red</i>	<i>Roe</i>	<i>Total</i>	<i>Red</i>	<i>Roe</i>	<i>Total</i>
2004/05	174	136	310	157	23	180	48	77	125	26	27	53	10	2	12	415	267	682
2005/06	118	134	252	103	38	141	62	43	105	55	30	85	2	0	2	340	245	585
2006/07	127	85	212	67	24	91	23	55	88	28	20	48	1	0	1	246	184	430
2007/08	100	69	169	41	39	80	25	3	28	25	21	46	0	1	1	191	133	324
2008/09	100	77	177	66	32	98	79	31	110	31	10	41	0	0	0	276	150	426
2009/10	73	90	163	56	42	98	77	46	123	54	33	87	0	1	1	260	212	472
2010/11	98	63	161	109	58	167	37	17	54	54	14	68	6	0	6	304	152	456
2011/12	90	89	179	46	31	77	41	6	47	47	45	92	2	0	2	226	171	397
2012/13	83	92	175	56	51	107	66	9	75	63	82	145	47	0	47	315	234	549
2013/14	76	89	165	52	27	79	11	49	60	86	174	260	23	8	31	248	347	595
2014/15	98	82	180	79	67	146	17	70	87	95	156	251	11	15	26	300	390	690
2015/16	81	128	209	68	85	153	39	80	119	116	151	267	16	14	30	320	458	778
2016/17	59	87	146	47	88	135	61	78	139	58	96	154	24	22	46	249	371	620
<i>10 yr av</i>	<i>86</i>	<i>87</i>	<i>172</i>	<i>62</i>	<i>52</i>	<i>114</i>	<i>45</i>	<i>39</i>	<i>84</i>	<i>63</i>	<i>78</i>	<i>141</i>	<i>13</i>	<i>6</i>	<i>19</i>	<i>269</i>	<i>262</i>	<i>531</i>

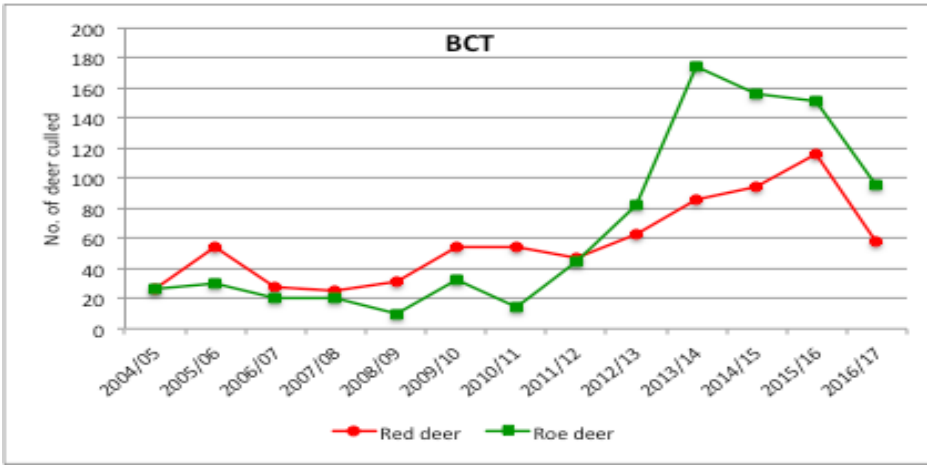
¹ In October 2014/15, a male Sika deer was also shot on Ballogie Estate

² These totals do not include the cull carried out by Ballogie Estate in DMU 2, the Commonly Pinewoods, which is included in the BCT totals

5 yr av.	79	96	175	60	64	124	39	57	96	84	132	215	24	12	36	286	360	646
----------	----	----	-----	----	----	-----	----	----	----	----	-----	-----	----	----	----	-----	-----	-----

Fig. 2 Red and Roe Deer Culls by main Group Members 2004-17





2 Red Deer Cull

Table 3 below shows the distribution of the 2016-17 red deer cull by Deer Management Unit (DMU)

Table 4 on the following page shows the red deer culls by DMG members for the period 2004-17.

Table 3 Birse Parish DMG Red Deer Cull by DMU 2016-17 (brackets = (2014/15)(2015/16))

Deer Mgt Units	Hectares	Red Deer Cull 2016-17				Cull/100 ha	Zone
		Stags	Hinds	Calves	Total		
1 Finzean West Woods	654	9	8	0	17	(1.1) (2.0) 2.6	F
2 Commonty Pinewoods	528	25	0	1	26	(5.5) (12.9) 4.9	F
3 Lamahip	401	8	8	1	17	(5.5) (2.5) 4.2	F
4 Arntilly	405	13	6	1	20	(4.9) (7.9) 4.9	F
5 Bogieshiel	434	0	1	0	1	(2.8) (1.4) 0.2	F
6 Craigmore & Midstrath	713	2	2	2	6	(3.1) (1.5) 0.8	L
7 Shannel & Coulnacraig	226	14	5	3	22	(3.1) (5.8) 9.7	L
8 Slewdrum Forest	173	5	3	2	10	(20.2) (10.7) 5.8	L
9 Craigbeg Plantation	94	1	5	2	8	(4.2) (6.4) 8.5	L
10 Finzean East	1007	1	0	0	1	(0.8) (2.0) 0.1	L
11 Easter Clune	572	5	0	0	5	(2.3) (0.5) 0.9	L
12 Peter Hill	1433	7	8	1	16	(3.3) (1.6) 1.1	H
13 Whitehill & Glaspits	1189	3	0	0	3	(0.8) (0.6) 0.3	H
14 Mudlee Bracks	1264	5	0	0	5	(0.2) (0.8) 0.4	H
15 Birse Hill	1293	8	2	0	10	(0.3) (0.2) 0.8	H
16 Birse Forest	736	14	13	1	28	(1.1) (2.6) 3.8	F
17 Birse Low Ground	514	4	8	2	14	(1.0) (2.3) 2.7	L
18 Balfour Forest	240	11	6	5	22	(13.3) (12.5) 9.2	F
19 Balfour Estate	193	1	1	0	2	(2.1) (1.6) 1.0	F
20 Carlogie	614	4	3	0	7	(1.6) (0.8) 1.1	L
21 Glen Ferrick	218	0	0	0	0	(0) (1.4) 0	F
22 Glencat	486	6	3	0	9	(0) (1.0) 1.9	H
Totals	13,387	146	82	21	249	(2.2) (2.4) 1.9	

Table 4: Birse Parish DMG Red Deer Culls 2004-17

	Ballogie Estate			Finzean Estate			Birse Estate			Birse Community Trust			Shannel + Balfour Estate ³			Parish Totals		
	Stags	Hinds+	Total	Stags	Hinds+	Total	Stags	Hinds+	Total	Stags	Hinds+	Total	Stags	Hinds+	Total	Stags	Hinds+	Total
2004/05	72	102	174	53	104	157	27	21	48	18	8	26	3	7	10	173	242	415
2005/06	44	74	118	46	57	103	49	13	62	17	38	55	0	2	2	156	184	340
2006/07	45	82	127	37	30	67	17	6	23	15	13	28	0	1	1	114	132	246
2007/08	67	33	100	22	19	41	25	0	25	15	10	25	0	0	0	129	62	191
2008/09	57	43	100	35	31	66	68	11	79	12	19	31	0	0	0	172	104	276
2009/10	34	39	73	29	27	56	49	28	77	9	45	54	0	0	0	121	139	260
2010/11	45	53	98	32	77	109	13	24	37	9	45	54	0	6	6	99	205	304
2011/12	53	37	90	18	28	46	20	21	41	19	28	47	2	0	2	112	114	226
2012/13	49	34	83	36	20	56	37	29	66	38	25	63	23	24	47	183	132	315
2013/14	49	27	76	29	23	52	4	7	11	33	53	86	9	14	23	124	124	248
2014/15	51	47	98	34	45	79	11	6	17	43	52	95	4	7	11	143	147	300
2015/16	54	27	81	34	34	68	19	20	39	94	22	116	12	4	16	213	107	320
2016/17	35	24	59	23	24	47	32	29	61	41	17	58	15	9	24	146	103	249

³ *No red deer were culled on the Shannel until 2012-13, when 20 stags and 21 hinds/calves were shot.
 In 2013-14, the Shannel cull was 9 stags and 12hinds/calves
 In 2014-15, the Shannel cull was 2 stags, 5 hinds/calves
 In 2015-16, the Shannel cull was 9 stags, 4 hinds
 In 2015-16, the Balfour Estate cull data is only to 31.12.15
 In 2016-17, the Shannel cull was 14 stags, 8 hinds/calves (including 2 hinds on Coulnacraig)*

3 Roe Deer Cull

Table 5 below shows the distribution of the 2016-17 roe deer cull by Deer Management Unit.

Table 6 on the next page shows the red deer culls by DMG members for the period 2004-17.

Table 5 Birse Parish DMG Roe Deer Cull 2016-17 by DMU (brackets = (2014/15)(2015-16))

Deer Mgt Units	Hectares	Roe Deer Cull 2016-17				Cull/100 ha	Zone
		Bucks	Does	Kids	Total		
1 Finzean West Woods	654	12	13	0	25	(2.8) (4.0) 3.8	F
2 Commonty Pinewoods	528	11	3	2	16	(5.3) (5.5) 3.0	F
3 Lamahip	401	9	0	1	10	(3.0) (4.2) 2.5	F
4 Arntilly	405	5	0	1	6	(3.2) (4.0) 1.5	F
5 Bogieshiel	434	8	8	2	18	(2.5) (4.1) 4.1	F
6 Craigmore & Midstrath	713	9	18	2	29	(2.8) (5.3) 4.1	L
7 Shannel & Coulnacraig	226	9	1	0	10	(3.1) (1.8) 4.4	L
8 Slewdrum Forest	173	15	10	16	41	(40.1) (31.5) 23.7	L
9 Craigbeg Plantation	94	7	6	2	15	(0) (8.5) 16.0	L
10 Finzean East	1007	7	13	0	20	(2.0) (2.1) 2.0	L
11 Easter Clune	572	5	6	0	11	(1.9) (2.1) 1.9	L
12 Peter Hill	1433	4	11	2	17	(1.1) (1.0) 1.2	H
13 Whitehill & Glaspits	1189	0	1	0	1	(0.3) (0.3) 0.1	H
14 Mudlee Bracks	1264	1	0	0	1	(0.1) (0.2) 0.1	H
15 Birse Hill	1293	7	7	0	14	(2.9) (2.0) 1.1	H
16 Birse Forest	736	6	20	0	26	(1.9) (4.1) 3.5	F
17 Birse Low Ground	514	3	13	0	16	(1.9) (4.5) 3.1	L
18 Balfour Forest	240	17	9	13	39	(25.0) (28.8) 16.3	F
19 Balfour Estate	193	6	6	0	12	(4.1) (5.2) 6.2	F
20 Carlogie	614	9	12	1	22	(3.4) (5.2) 3.7	L
21 Glen Ferrick	218	0	0	0	0	(0.9) (1.8) 0	F
22 Glencat	486	9	13	0	22	(0.2) (0.2) 4.5	H
Totals	13,387	159	170	42	371	(2.9) (3.4) 2.8	

Table 6: Birse Parish DMG Roe Deer Culls 2004-17

	Ballogie Estate			Finzean Estate			Birse Estate			Birse Community Trust			Shannel + Balfour Estate ⁴			Parish Totals		
	Bucks	Does+	Total	Bucks	Does+	Total	Bucks	Does+	Total	Bucks	Does+	Total	Bucks	Does+	Total	Bucks	Does+	Total
2004/05	36	102	136	13	10	23	7	70	77	8	19	27	0	2	2	64	203	267
2005/06	34	100	134	21	17	38	13	30	43	10	20	30	0	0	0	78	167	245
2006/07	27	58	85	10	14	24	13	42	55	10	10	20	0	0	0	60	124	184
2007/08	29	40	69	17	22	39	2	1	3	5	16	21	1	0	1	54	79	133
2008/09	28	49	77	17	15	32	9	22	31	2	8	10	0	0	0	56	94	150
2009/10	43	47	90	19	23	42	11	35	46	17	16	33	1	0	1	91	121	212
2010/11	30	33	63	21	37	58	14	3	17	4	10	14	0	0	0	69	83	152
2011/12	38	51	89	18	13	31	6	0	6	16	29	45	0	0	0	78	93	171
2012/13	39	53	92	21	30	51	5	4	9	30	52	82	0	0	0	95	139	234
2013/14	61	28	89	19	8	27	18	31	49	75	99	174	5	3	8	178	169	347
2014/15	34	48	82	30	37	67	20	50	70	54	102	156	11	4	15	149	241	390
2015/16	36	92	128	35	50	85	18	62	80	57	94	151	8	6	14	154	304	458
2016/17	41	46	87	35	53	88	25	53	78	43	53	96	15	7	22	159	212	371

⁴ *There are no recorded roe culls from the Shannel prior to 2013-14. The cull in the Shannel DMU (including Coulnacraig) since then has been:
 In 2013-14 = 3 bucks and 2 does/others.
 In 2014-15 = 6 bucks, 1 doe.
 In 2015-16 = 4 bucks.
 In 2016-17 = 9 bucks, 1 doe (including one doe from Coulnacraig)*

4. Cull Totals by Deer Management Zone

Table 7 Total Deer Cull by Deer Management Zone				
	Low Ground 3,912 ha (29%)	Forest 3929 ha (29%)	Hill 5,546 ha (42%)	Total 13,387 ha (100%)
2012/13	202 (39%) (5.0 /100ha)	304 (53%) (7.7 /100ha)	43 (8%) (0.7 /100ha)	549 (100 %) (4.1 /100ha)
2013/14	237 (44%) (6.1 /100ha)	294 (45%) (7.5 /100ha)	64 (11%) (1.2 /100ha)	595 (100%) (4.4 /100ha)
2014/15	260 (38%) (6.6 /100ha)	307 (44%) (7.8 /100ha)	123 (18%) (2.2 /100ha)	690 (100%) (5.1 /100ha)
2015/16	279 (36%) (7.1 /100ha)	403 (52%) (10.1 /100ha)	96 (12%) (1.7 /100ha)	778 (100%) (5.8 /100ha)
2016/17	237 (38%) (6.1 /100ha)	285 (46%) (7.3 /100ha)	98 (16%) (1.8 /100ha)	620 (100%) (4.6 /100ha)

Table 8 Red Deer Cull by Deer Management Zone				
	Low Ground 3,912 ha (29%)	Forest 3929 ha (29%)	Hill 5,546 ha (42%)	Total 13,387 ha (100%)
2012/13	126 (40%) (3.1 /100ha)	165 (52%) (4.2 /100ha)	24 (8%) (0.4 /100ha)	315 (100%) (2.4 /100ha)
2013/14	108 (44%) (2.8 /100ha)	113 (45%) (2.9 /100ha)	27 (11%) (0.5 /100ha)	248 (100%) (1.9 /100ha)
2014/15	103 (34%) (2.6 /100ha)	134 (45%) (3.4 /100ha)	63 (21%) (1.1 /100ha)	300 (100%) (2.2 /100ha)
2015/16	88 (28%) (2.3 /100ha)	184 (57%) (4.7 /100ha)	48 (15%) (0.9 /100ha)	320 (100%) (2.4 /100ha)
2016/17	73 (29%) (1.9 /100ha)	133 (54%) (3.4 /100ha)	43 (17%) (0.8 /100ha)	249 (100%) (1.9 /100ha)

Table 9 Roe Deer Cull by Deer Management Zone				
	Low Ground 3,912 ha (29%)	Forest 3929 ha (29%)	Hill 5,546 ha (42%)	Total 13,387 ha (100%)
2012/13	76 (33%) (1.9 /100ha)	139 (59%) (3.5 /100ha)	19 (8%) (0.3 /100ha)	234 (100%) (1.7/100ha)
2013/14	129 (37%) (3.3 /100ha)	181 (52%) (4.6 /100ha)	37 (11%) (0.7 /100ha)	347 (100%) (2.6 /100ha)
2014/15	157 (40%) (4.0 /100ha)	173 (44%) (4.4 /100ha)	60 (16%) (1.1 /100ha)	390 (100%) (2.9 /100ha)
2015/16	191 (42%) (4.9 /100ha)	219 (47%) (5.5 /100ha)	48 (11%) (0.9 /100ha)	458 (100%) (3.4 / 100 ha)

2016/17	164 (44%) (4.2 /100ha)	152 (41%) (3.9 /100ha)	55 (15%) (1.0 /100ha)	371 (100%) (2.8 /100ha)
---------	---------------------------	---------------------------	--------------------------	----------------------------

5. Interim Cull Totals

Table 10 Birse Parish DMG Cull in 2016-17 by Period of Year (brackets = previous years)				
Period to	Total Red Cull at date	Total Roe Cull at date	Cull in Period	% of Total Cull
30th Sept.	80	149	(183) (253) 229	(27%) (33%) 37%
31st Dec.	163	232	(270) (236) 166	(39%) (30%) 27%
31st March	249	371	(237) (289) 225	(34%) (37%) 36%
Totals	249	371	(690) (778) 620	100%

6 SNH Authorisations

Information from four main members. No authorisations on Balfour Estate or the Shannel.

Table 11 Out of Season						
	Red		Roe		Both Spp. O/S	
	No.	% Cull	No.	% Cull	% Male	% Female + calves/kids
2012/13	68	22%	26	11%	70%	30%
2013/14	92	37%	46	13%	49%	51%
2014/15	73	25%	28	7%	60%	40%
2015/16	155	48%	50	11%	69%	31%
2016/17	94	38%	43	12%	53%	47%

Table 12 Night Shooting						
	Red		Roe		Both Spp. N/S	
	No.	% Cull	No.	% Cull	% Male	% Female + calves/kids
2012/13	24	8%	40	17%	30%	70%
2013/14	49	20%	70	20%	43%	57%
2014/15	53	18%	83	21%	27%	73%
2015/16	33	10%	66	15%	32%	68%
2016/17	27	11%	46	12%	7%	93%

7 Carcase Weights (clean carcase weight – no gralloch).

Table 13 Red Deer Carcase Weights (kgs)												
	Ballogie Estate				Finzean Estate				BCT (Balfour+Slewdrum)			
	<i>Stag Aver. Wt</i>	<i>Stag Top Wt</i>	<i>Hind Aver. Wt</i>	<i>Hind Top Wt</i>	<i>Stag Aver. Wt</i>	<i>Stag Top Wt</i>	<i>Hind Aver. Wt</i>	<i>Hind Top Wt</i>	<i>Stag Aver. Wt</i>	<i>Stag Top Wt</i>	<i>Hind Aver. Wt</i>	<i>Hind Top Wt</i>
2012/13	56	90	45	56	51	90	36	50	65	105	51	82
2013/14	50	85	41	55	56	90	48	55	73	103	43	68
2014/15	54	90	45	60	55	85	38	50	72	118	51	75
2015/16	55	98	44	56	55	80	43	60	62	116	51	61
2016/17	53	85	45	63	61	100	43	60	56	92	49	65

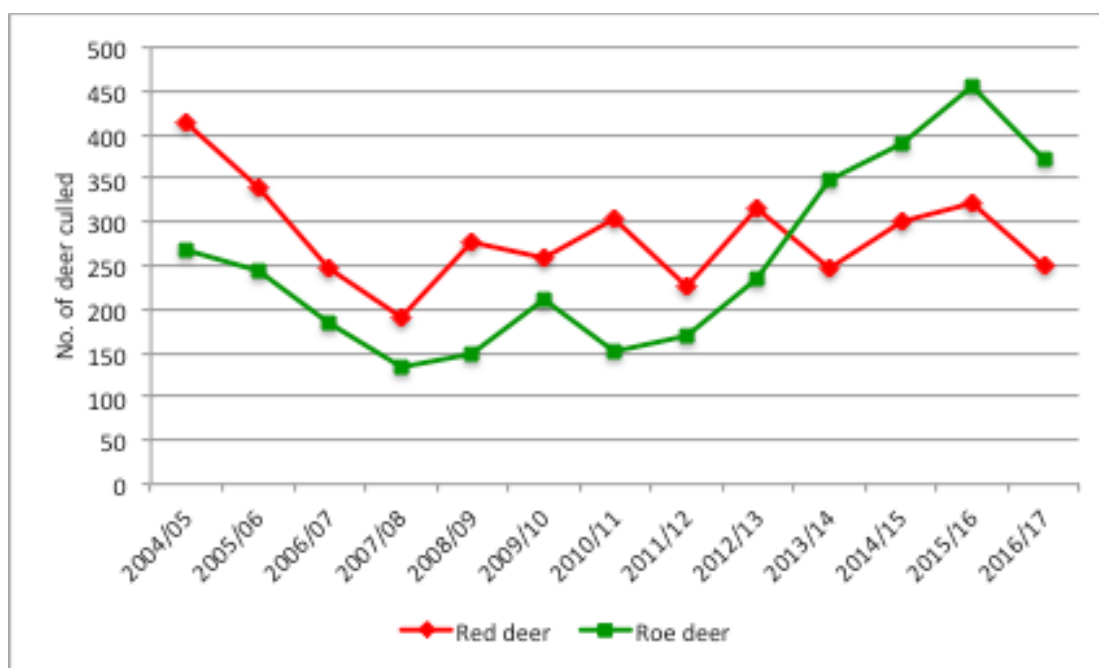
Table 14 Roe Deer Carcase Weights (kgs)												
	Ballogie Estate				Finzean Estate				BCT (Balfour+Slewdrum)			
	<i>Buck Aver. Wt</i>	<i>Buck Top Wt</i>	<i>Doe Aver. Wt</i>	<i>Doe Top Wt</i>	<i>Buck Aver. Wt</i>	<i>Buck Top Wt</i>	<i>Doe Aver. Wt</i>	<i>Doe Top Wt</i>	<i>Buck Aver. Wt</i>	<i>Buck Top Wt</i>	<i>Doe Aver. Wt</i>	<i>Doe Top Wt</i>
2012/13	12	18	11	18	16	20	16	20	13	19	11	20
2013/14	13	19	10	16	18	25	11	23	14	19	12	18
2014/15	12	17	10	16	14	18	12	20	14	19	12	19
2015/16	12	18	12	18	15	22	14	18	15	20	16	19
2016/17	13	17	12	16	14	19	15	20	15	19	17	19

PART TWO TARGETS FOR THE CULL IN 2017-18

8 Overall Cull in 2016-17

- 1 Part One of the Report shows that 249 red and 371 roe deer were shot in the BP DMG area in 2016-17. The overall cull of 620 deer was 40% red and 60% roe. This ratio meets the DMG's target of culling significantly more roe than red deer each year to reflect that there are more roe deer locally than red deer.
- 2 The DMG started 2016-17 with cull targets of over 300 red and over 400 roe to match the cull of over 700 deer in 2015-16, given the apparent numbers of both species locally still. However, during the year, the targets were revised downwards to over 250 red and over 350 roe due to a number of factors.
- 3 Figure 3 below shows that, while the culls of 249 red and 371 roe can be considered to have met the DMG's revised targets, both totals are lower than in the previous two years. While the red total continued the pattern of fluctuating red cull levels around 250-300 deer, the roe total maintain the new higher level of roe culls in recent years.
- 4 2016-17 was the final year of the DMG's 3 year Deer Management Plan 2014-17. During the Plan, a total of 2,088 deer were shot in the DMG area. Compared to the previous 3 years, the average annual red cull increased from 263 to 290 during the Plan and the average annual roe cull increased from 251 to 406.
- 5 In the Plan, the target for red deer was to increase the average cull from the previous 10 year average of 282 and that was achieved by a small margin with the average of 290 during the Plan. The target for roe was over 300 each year and that was fully achieved with culls of 390, 454 and 371 during the Plan

Figure 3 Total Culls of Red and Roe Deer in BP DMG Area 2004-17



9. RED DEER - Cull Targets 2017-18

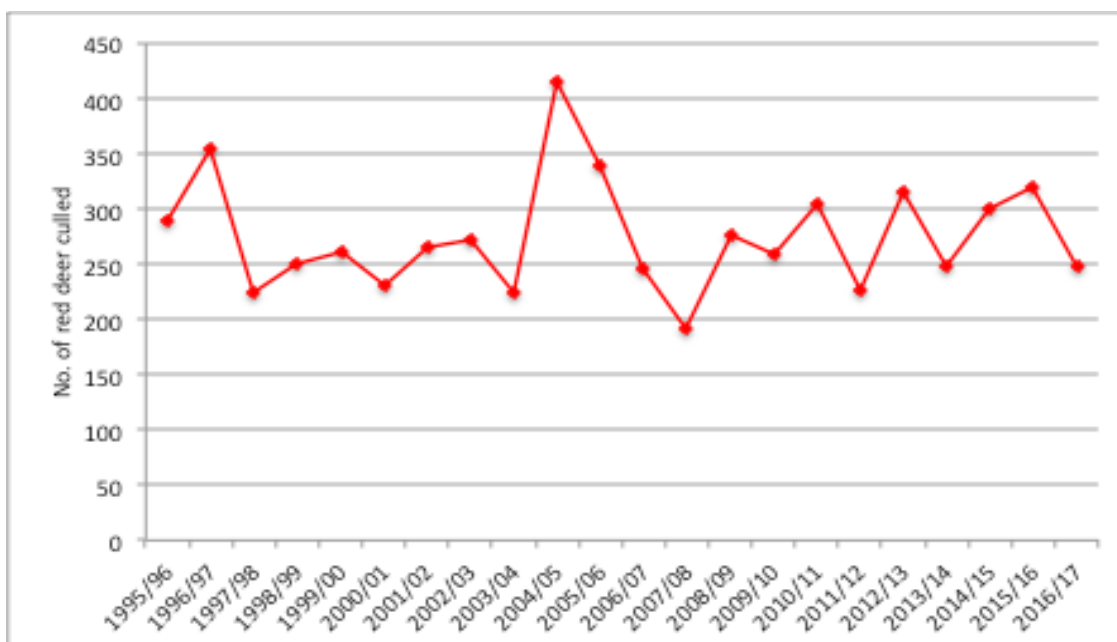
9.1 Red Deer Cull 2016-17

- 1 There continued to be significant numbers of red deer in the DMG area during most of the year. There was damage to barley by red deer in the north of the parish again, as well as continuing issues for forestry interests. For the second year in a row, a group of 70-80 red deer moved between the Balfour / Kinminity and Balnacraig areas in the autumn.
- 2 Large groups of red deer continued to be seen at times through the year, for example recently, 50+ moving through the Shannel in mid March. There was no reduction in the herd of 100 or more in Glen Aven, although it remains unclear to what extent deer leak out from the herd into the Forest of Birse and other areas.
- 3 The total cull of 249 red deer very nearly met the DMG's reduced target of 250. More stags than hinds were shot again (146:103), but the difference was not as marked as in 2015-16. There was another open winter with very little snow. 54 or 22% of the red deer cull was taken in the final month of the season.

9.2 Red Deer Cull Targets 2017-18

- 1 The Group remains committed as its main priority, to reducing the local issues resulting from the relatively high numbers of red deer in the DMG area. The main members of the Group are similarly committed to carrying out the red deer culls necessary to achieve this.
- 2 However, the continuing damage to agricultural and forestry interests in parts of the area and the large sizes of the groups of red deer still seen in the area, reflect that the Group needs to make more significant progress in reducing the numbers of red deer locally. Figure 4 below shows that the cull of 249 in 2016-17 with the level of culls over the last 20 years.

Fig.4 Annual Red Deer Cull in BP DMG Area during 22 years 1995-2017



- 3 The DMG members are not clear on the origin of all the red deer required to produce an average annual cull of nearly 300 each year. However, while there is in-migration to the area at times, it might be considered from the cull figures over the years that most of the annual recruitment appears to come from red deer born within the DMG area.
- 4 The main members have agreed that they need to cull a minimum of 250 red deer in 2017-18, The main members have allocated that minimum total between themselves as shown in Table 15.

Table 15 Agreed Minimum Red Deer Target Culls 2017-18.

Member	Area (ha)	Total Cull 2016-17	Min. Target 2017-18
<i>Ballogie Estate</i>	<i>5,020</i>	<i>59</i>	<i>90</i>
<i>Finzean Estate</i>	<i>3,978</i>	<i>47</i>	<i>55</i>
<i>Birse Estate</i>	<i>3,029</i>	<i>61</i>	<i>50</i>
<i>BCT</i>	<i>936</i>	<i>68</i>	<i>55</i>
<i>Total</i>		<i>225</i>	<i>250</i>

- 5 The main members intend to shoot more than the minimum if they can and, with culls that might be taken on Balfour Estate and the Shannel on top of that, the aim is that a cull of 300 should be achieved again, as in the two years before 2016-17. In 2016-17, Balfour Estate and the Shannel shot 24 red deer or 10% of the DMG total.
- 6 The main members also recognise that there continue to be particular issues over red deer damage in the north west part of the DMG area. The 6 DMUs in and around that area cover 20% of the DMG area. The DMUs and the overall culls in that part of the DMG area over the last 5 years are shown in Table 16 below.
- 7 The members responsible for these DMUs are already trying to reduce the numbers of red deer in this north-west area and are agreed that there will be a continuing high cull effort in 2017-18 aimed at reducing both red and roe deer in the area.

Table 16 Five Year Cull in North West Part of DMG Area			
(6 DMUs = Birse Low Ground., Birse Forest, Glencat, Balfour Forest, Balfour Estate, Bogieshiel = 2,603 ha)			
(figures in brackets = % of DMG cull)			
	RED	ROE	TOTAL
2012/13	113 (36%)	75 (32%)	188 (34%)
2013/14	50 (20%)	125 (36%)	175 (29%)
2014/15	61 (20%)	111 (28%)	172 (25%)
2015/16	75 (23%)	147 (32%)	222 (29%)
2016/17	76 (31%)	131 (35%)	207 (33%)

10. ROE DEER - Cull Targets 2017-18

10.1 Roe Deer Cull 2016-17

- 1 The 2016-17 roe cull of 371 exceeded the DMG's reduced target of 350 or more, but did not achieve the intended target of over 400. However, the cull maintained the significantly higher level of roe culls in recent years.
- 2 During the last five years 2012/13-2016/17, the DMG has shot 1,800 roe deer. This is almost 1,000 more than the 818 shot in the previous five years. However, roe deer continue to be relatively abundant in the DMG area.
- 3 While more does than bucks were shot again in 2016-17, the difference of 159 bucks and 212 does was less than the previous year. The difference is also exaggerated as the DMG still incorporates all the kids shot with the doe cull, when a proportion will be male kids.

10.2 Roe Deer Cull Targets 2017-18

- 1 The main members of the DMG each have a strong, local, economic self-interest in managing roe deer effectively in the DMG area. There are also important local and environmental and social reasons for achieving this.
- 2 The main members recognise that there are still relatively high numbers of roe deer in much of the DMG area and a continuing need for higher overall roe culls to try to reduce the numbers to more sustainable levels.
- 3 The main members have agreed that they need to cull over 350 roe deer in 2017-18, and have allocated that minimum total between themselves as shown in Table 17.
- 4 The main members intend to shoot more than the minimum if they can and, with culls that might be taken on Balfour Estate and the Shannel on top of that, the aim is that the cull should be over 400. In 2016-17, Balfour Estate and the Shannel shot 22 roe deer or 6% of the DMG total.
- 5 There is already a significant roe cull in the 6 DMUs in the north west part of the DMG, where there is a particular focus on tackling the number of red deer. Members in that area will aim to maintain or improve the current level of the roe culls there.

Table 17 Agreed Minimum Roe Deer Target Culls 2017-18.

Member	Area (ha)	Total Cull 2016-17	Min. Target 2017-18
<i>Ballogie Estate</i>	<i>5,020</i>	<i>87</i>	<i>105</i>
<i>Finzean Estate</i>	<i>3,978</i>	<i>88</i>	<i>85</i>
<i>Birse Estate</i>	<i>3,029</i>	<i>78</i>	<i>70</i>
<i>BCT</i>	<i>936</i>	<i>96</i>	<i>90</i>
<i>Total</i>		<i>349</i>	<i>350</i>

11. OVERALL CULL TARGETS 2017-18

- 1 2016-17 was the final year of the DMG's 3 year Deer Management Plan 2014-17. During the period of the Plan compared to the previous 3 years, while the DMG increased its average annual red cull from 263 to 290, it increased its average annual roe cull from 251 to 406.
- 2 Both species continue to thrive in the favourable habitat of the DMG area and the main members recognise that higher numbers of both species need to be culled to reduce the current local populations to lower, sustainable levels.
- 3 The DMG will be agreeing a new Deer Management Plan in 2017 to set out its approach to managing the local deer populations during the five years 2017-22.
- 4 At the start of the 2017-18 season, the main members have agreed the minimum cull targets below, with the aspiration that the red deer cull should be 300 or more and the roe cull 400 or more in 2017-18

Table 18 Agreed Minimum Red and Roe Deer Target Culls 2017-18

Member	Area (ha)	Min. Red 2017-18	Min. Roe 2017-18	Min. Target 2017-18
<i>Ballogie</i>	<i>5,020</i>	90	105	195
<i>Finzean</i>	<i>3,978</i>	55	85	140
<i>Birse</i>	<i>3,029</i>	50	70	120
<i>BCT</i>	<i>936</i>	55	90	145
<i>Total</i>		250	350	600

- 5 The cull of 249 red and 371 roe in 2016-17 represents a substantial amount of time and physical effort by the stalkers involved in carrying out the cull. A key challenge for the deer managers is to ensure that there are human resources available in terms of stalkers and stalker outings, to improve on those cull levels in 2017-18.