

**Birse Parish Deer Management Group
(BP DMG)**

**REPORT ON DEER MANAGEMENT
2021-22**

CONTENTS

Introduction

Map of DMG Area and Deer Management Units

Part One Description of the Cull in 2021-22

- 1 Overall Cull Totals
- 2 Red Deer Cull
- 3 Roe Deer Cull
- 4 Interim Cull Totals
- 5 SNH Authorisations
- 6 Carcase Weights

Part Two Targets for the Cull in 2022-23

- 7 Overall Cull in 2021-22
- 8 Red Deer Cull Targets 2022-23
- 9 Roe Deer Cull Targets 2022-23
- 10 Overall Cull Targets 2022-23

BIRSE PARISH DEER MANAGEMENT GROUP

Report on Deer Management 2021-22

Introduction

The Birse Parish Deer Management Group (BP DMG) involves all the properties over 100 ha within the DMG area. The members are Ballogie, Finzean and Birse Estates, Birse Community Trust (BCT), Balfour Estate and the Shannel.

The DMG area covers the civil parish of Birse and the adjoining Carlogie area, as outlined on the map on the next page. The DMG area is approximately 13,387 hectares or 33,080 acres.

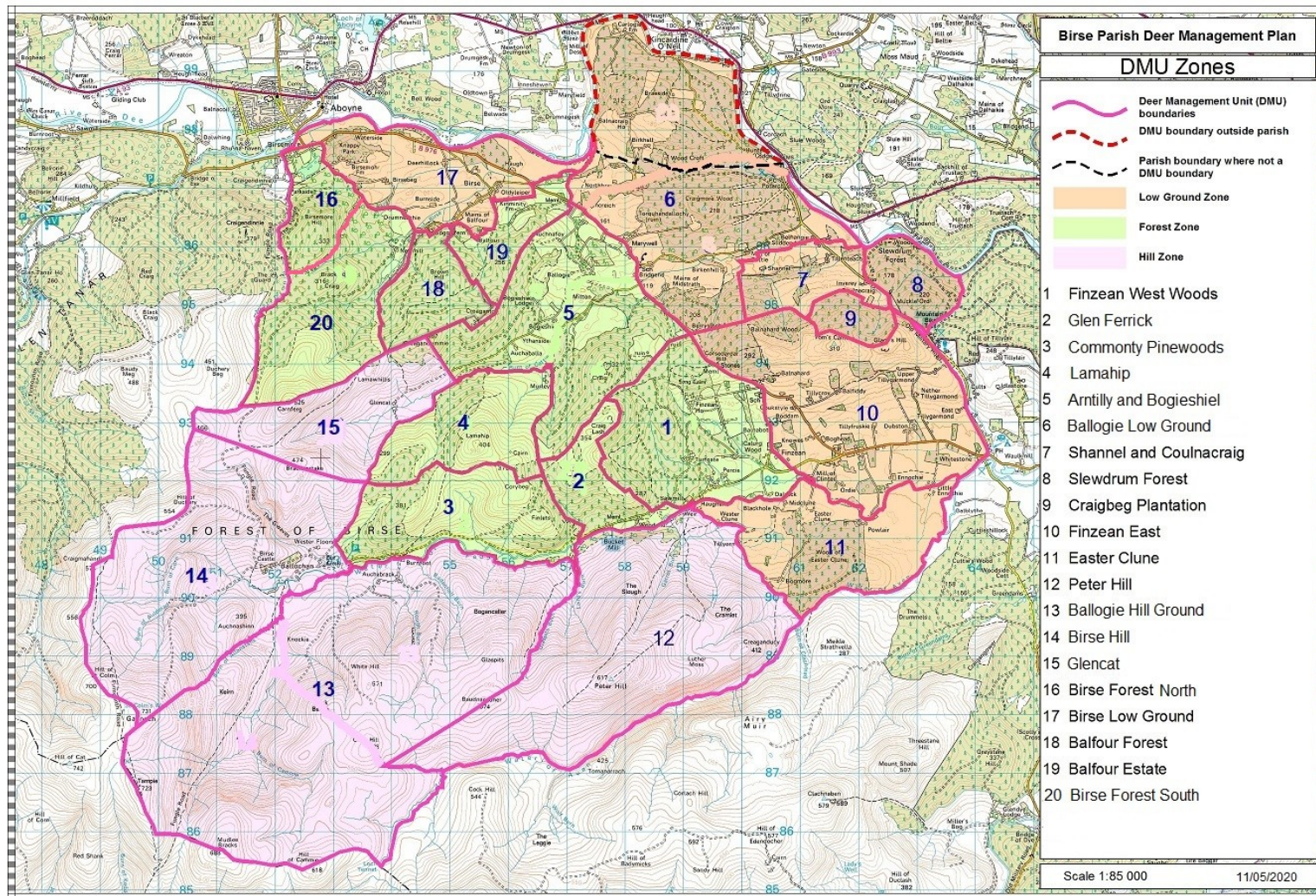
The production of this annual cull report is part of implementing the Birse Parish Deer Management Plan 2019-24. The purpose of the report is to inform BP DMG discussions about:

- (a) the DMG's red and roe deer culls in the previous year (2021-22);
- (b) the DMG's red and roe deer cull targets in the coming year (2022-23)

The Group's Deer Management Plan and annual reports since 2012-13, are on the Birse Community Trust website with other BP DMG papers at: <https://www.birsecommunitytrust.org.uk/download-categories/birse-parish-deer-management-group>

The DMG area is divided into 20 Deer Management Units (DMUs), as shown on the map on the next page. The DMUs are allocated to one of three zones, depending on their character (low ground, forest, hill). There are:-

- 4 hill DMUs covering 5,546 ha (c.40% of DMG area)(average c.1,100ha ea)
- 9 forest DMUs covering 3,929 ha (c.30% of DMG area)(average c.450ha ea)
- 7 low ground DMUs covering 3,912 ha (c.30% of DMG area)(av.c.500ha ea)



PART ONE - DESCRIPTION OF THE CULL IN 2021-22

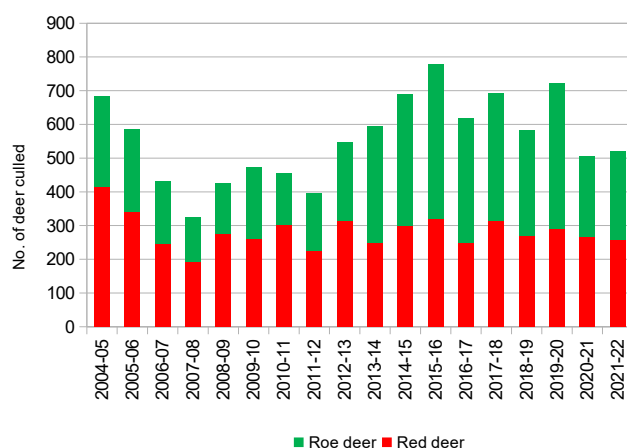
1 Overall Total Culls

The total red and roe culls in the DMG area in 2021-22 are shown in Table 1 and Figure 1 below. The contributions of the six DMG Members to the total red and roe culls are shown in Table 2 on the next page. Fig.2 then shows the patterns of the annual culls by the four main DMG Members.

Table 1: Total Culls of Red and Roe Deer

	RED	ROE	Total Cull	Red : Roe %
2004-05	415	267	682	61 : 39
2005-06	340	245	585	58 : 42
2006-07	246	184	430	57 : 43
2007-08	191	133	324	59 : 41
2008-09	276	150	426	65 : 35
2009-10	260	212	472	55 : 45
2010-11	304	152	456	67 : 33
2011-12	226	171	397	57 : 43
2012-13	315	234	549	57 : 43
2013-14	248	347	595	42 : 58
2014-15	300	390	690	43 : 57
2015-16	320	458	778	41 : 59
2016-17	249	371	620	40 : 60
2017-18	314	377	691	45 : 55
2018-19	269	312	581	46 : 54
2019-20	290	433	723	40 : 60
2020-21	267	239	506	53 : 47
2021-22	257	264	521	49 : 51

Figure 1: Total Culls of Red and Roe Deer



Birse Parish Deer Management Group (BP DMG)

Table 2 Red and Roe Deer Cull Totals 2004/05 - 2021/22 ¹

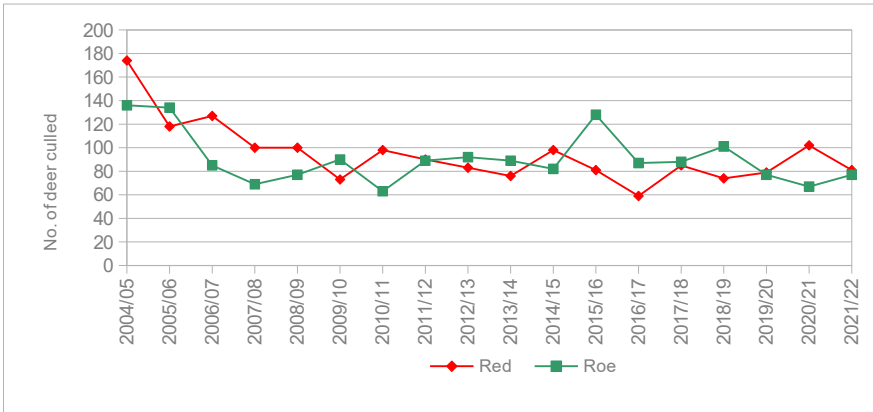
	Ballogie Estate <i>(DMUs 4,5,6,13)²</i> 5,020 ha			Finzean Estate <i>(DMUs 1,2,9,10,11,12)</i> 3,978 ha			Birse Estate <i>(DMUs 14,15,16,17,20)</i> 3,039 ha			BCT <i>(DMUs 3,8,18)</i> 936 ha			Shannel+Balfour Est. <i>(DMUs 7 + 19)</i> 419 ha			BP DMG Area <i>(DMUs 1-20)</i> 13,382 ha		
	<i>Red</i>	<i>Roe</i>	Total	<i>Red</i>	<i>Roe</i>	Total	<i>Red</i>	<i>Roe</i>	Total	<i>Red</i>	<i>Roe</i>	Total	<i>Red</i>	<i>Roe</i>	Total	<i>Red</i>	<i>Roe</i>	Total
2004/05	174	136	310	157	23	180	48	77	125	26	27	53	10	2	12	415	267	682
2005/06	118	134	252	103	38	141	62	43	105	55	30	85	2	0	2	340	245	585
2006/07	127	85	212	67	24	91	23	55	88	28	20	48	1	0	1	246	184	430
2007/08	100	69	169	41	39	80	25	3	28	25	21	46	0	1	1	191	133	324
2008/09	100	77	177	66	32	98	79	31	110	31	10	41	0	0	0	276	150	426
2009/10	73	90	163	56	42	98	77	46	123	54	33	87	0	1	1	260	212	472
2010/11	98	63	161	109	58	167	37	17	54	54	14	68	6	0	6	304	152	456
2011/12	90	89	179	46	31	77	41	6	47	47	45	92	2	0	2	226	171	397
2012/13	83	92	175	56	51	107	66	9	75	63	82	145	47	0	47	315	234	549
2013/14	76	89	165	52	27	79	11	49	60	86	174	260	23	8	31	248	347	595
2014/15	98	82	180	79	67	146	17	70	87	95	156	251	11	15	26	300	390	690
2015/16	81	128	209	68	85	153	39	80	119	116	151	267	16	14	30	320	458	778
2016/17	59	87	146	47	88	135	61	78	139	58	96	154	24	22	46	249	371	620
2017/18	85	88	173	72	60	132	73	71	144	63	128	191	21	30	51	314	377	691
2018/19	74	101	175	73	69	142	78	18	96	37	100	137	7	24	31	269	312	581
2019/20	79	77	156	43	67	110	73	74	147	80	198	278	15	17	32	290	433	723
2020/21	102	67	169	55	60	115	51	23	74	44	82	126	15	7	22	267	239	506
2021/22	81	77	158	48	30	78	76	60	136	33	90	123	19	7	26	257	264	521
<i>10 yr av</i>	82	89	171	59	60	119	55	53	108	68	126	194	18	14	32	283	342	625
<i>5 yr av.</i>	84	82	166	58	57	115	70	49	119	51	120	171	12	17	29	279	325	604

¹ In October 2014/15, a male Sika deer was also shot on Ballogie Estate

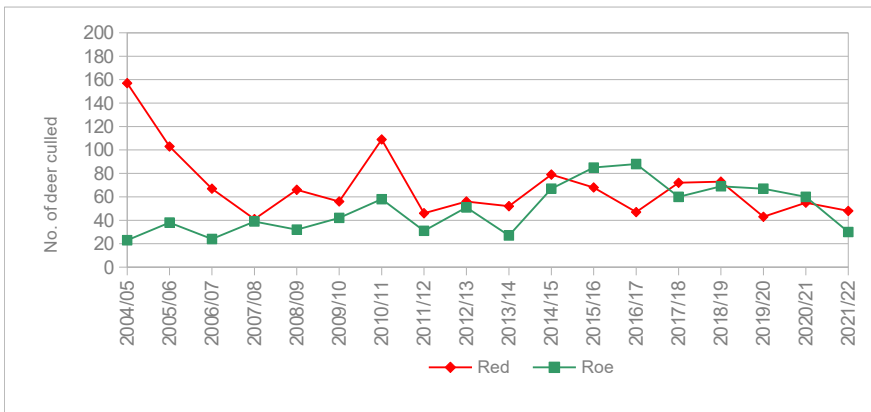
² These totals do not include the cull carried out by Ballogie Estate in DMU 3, the Commonly Pinewoods, which is included in the BCT totals

Fig. 2 Red and Roe Deer Culls by main Group Members 2004-22

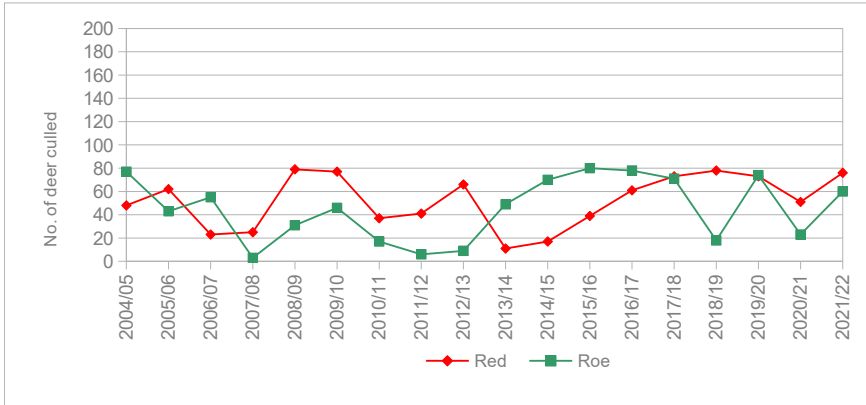
Ballogie Estate



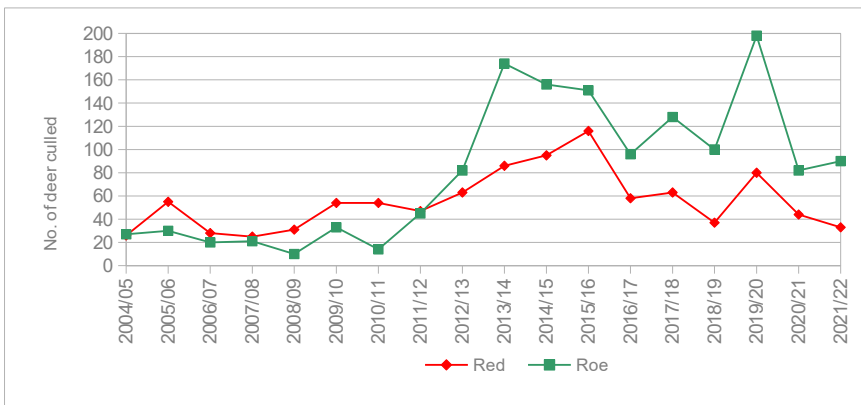
Finzean Estate



Birse Estate



BCT



2 Red Deer Cull

Table 3 below shows the red deer culls by DMG members for the period 2004-22

	Ballogie Estate			Finzean Estate			Birse Estate			Birse Community Trust			Shannel + Balfour Estate ³			Parish Totals		
	Stags	Hinds+	Total	Stags	Hinds+	Total	Stags	Hinds+	Total	Stags	Hinds+	Total	Stags	Hinds+	Total	Stags	Hinds+	Total
2004/05	72	102	174	53	104	157	27	21	48	18	8	26	3	7	10	173	242	415
2005/06	44	74	118	46	57	103	49	13	62	17	38	55	0	2	2	156	184	340
2006/07	45	82	127	37	30	67	17	6	23	15	13	28	0	1	1	114	132	246
2007/08	67	33	100	22	19	41	25	0	25	15	10	25	0	0	0	129	62	191
2008/09	57	43	100	35	31	66	68	11	79	12	19	31	0	0	0	172	104	276
2009/10	34	39	73	29	27	56	49	28	77	9	45	54	0	0	0	121	139	260
2010/11	45	53	98	32	77	109	13	24	37	9	45	54	0	6	6	99	205	304
2011/12	53	37	90	18	28	46	20	21	41	19	28	47	2	0	2	112	114	226
2012/13	49	34	83	36	20	56	37	29	66	38	25	63	23	24	47	183	132	315
2013/14	49	27	76	29	23	52	4	7	11	33	53	86	9	14	23	124	124	248
2014/15	51	47	98	34	45	79	11	6	17	43	52	95	4	7	11	143	147	300
2015/16	54	27	81	34	34	68	19	20	39	94	22	116	12	4	16	213	107	320
2016/17	35	24	59	23	24	47	32	29	61	41	17	58	15	9	24	146	103	249
2017/18	45	40	85	31	41	72	57	16	73	40	23	63	6	15	21	179	135	314
2018/19	35	39	74	22	51	73	57	21	78	27	10	37	5	2	7	146	123	269
2019/20	38	41	79	32	11	43	50	23	73	27	53	80	10	5	15	157	133	290
2020/21	50	52	102	27	28	55	36	15	51	26	18	44	6	9	15	145	122	267
2021/22	50	31	81	26	22	48	64	12	76	26	7	33	9	10	19	175	82	257

³ *No red deer were culled on the Shannel until 2012-13, when 20 stags and 21 hinds/calves were shot.
Shannel cull – 2013-14 (9 stags, 12 hinds/calves) 2014-15 (2 stags, 5 hinds/calves) 2015-16 (9 stags, 4 hinds) 2016-17 (14 stags, 8 hinds/calves)
2017-18 (4 stags, 12 hinds) 2018-19 (3 stags, 2 hinds/calves) 2019-20 (8 stags, 4 hinds/calves) 2020-21 (4 stags, 9 hinds/calves) 2021-22 (5 stags, 7
hinds/calves*

3 Roe Deer Cull

Table 4 below shows the roe deer culls by DMG members for the period 2004-21

	Ballogie Estate			Finzean Estate			Birse Estate			Birse Community Trust			Shannel + Balfour Estate ⁴			Parish Totals		
	Bucks	Does+	Total	Bucks	Does+	Total	Bucks	Does+	Total	Bucks	Does+	Total	Bucks	Does+	Total	Bucks	Does+	Total
2004/05	36	102	136	13	10	23	7	70	77	8	19	27	0	2	2	64	203	267
2005/06	34	100	134	21	17	38	13	30	43	10	20	30	0	0	0	78	167	245
2006/07	27	58	85	10	14	24	13	42	55	10	10	20	0	0	0	60	124	184
2007/08	29	40	69	17	22	39	2	1	3	5	16	21	1	0	1	54	79	133
2008/09	28	49	77	17	15	32	9	22	31	2	8	10	0	0	0	56	94	150
2009/10	43	47	90	19	23	42	11	35	46	17	16	33	1	0	1	91	121	212
2010/11	30	33	63	21	37	58	14	3	17	4	10	14	0	0	0	69	83	152
2011/12	38	51	89	18	13	31	6	0	6	16	29	45	0	0	0	78	93	171
2012/13	39	53	92	21	30	51	5	4	9	30	52	82	0	0	0	95	139	234
2013/14	61	28	89	19	8	27	18	31	49	75	99	174	5	3	8	178	169	347
2014/15	34	48	82	30	37	67	20	50	70	54	102	156	11	4	15	149	241	390
2015/16	36	92	128	35	50	85	18	62	80	57	94	151	8	6	14	154	304	458
2016/17	41	46	87	35	53	88	25	53	78	43	53	96	15	7	22	159	212	371
2017/18	41	47	88	34	26	60	37	34	71	69	59	128	21	9	30	202	175	377
2018/19	46	55	101	27	42	69	12	6	18	64	36	100	18	6	24	167	145	312
2019/20	37	40	77	34	33	67	43	31	74	73	125	198	10	7	17	197	236	433
2020/21	18	49	67	24	36	60	7	16	23	40	42	82	7	0	7	96	143	239
2021/22	24	53	77	14	16	30	33	27	60	49	41	90	3	4	7	123	141	264

⁴ There are no recorded roe culls from the Shannel prior to 2013-14.

The cull in the Shannel DMU (including Coulnacraig) 2013-14 (3 bucks, 2 does/others) 2014-15 (6 bucks, 1 doe) 2015-16 (4 bucks) 2016-17 (9 bucks, 1 doe) 2017-18 (11 bucks, 2 does) 2018-19 (10 bucks) 2019-20 (7 bucks, 5 does/kids) 2020-21 (2 bucks) 2021-22 (1 buck)

4. Interim Cull Totals

Table 5 Birse Parish DMG Cull in 2021-22 by Period of Year (brackets = previous years)				
Period to	Total Red Cull at date	Total Roe Cull at date	Cull in Period	% of Total Cull
20th Oct.	146	123	(259) (142) 269	(36%) (28%) 52%
31st Dec.	38	38	(215) (191) 76	(30%) (38%) 158%
31st March	73	103	(249) (173) 176	(34%) (34%) 34%
<i>Totals</i>	<i>257</i>	<i>264</i>	<i>(723) (506) 521</i>	<i>100%</i>

5. SNH Authorisations

Information from four main members. No authorisations on Balfour Estate or the Shannel.

Table 6 Out of Season						
	Red		Roe		Both Spp. O/S	
	No.	% Cull	No.	% Cull	% Male	% Female + calves/kids
2012/13	68	22%	26	11%	70%	30%
2013/14	92	37%	46	13%	49%	51%
2014/15	73	25%	28	7%	60%	40%
2015/16	155	48%	50	11%	69%	31%
2016/17	94	38%	43	12%	53%	47%
2017/18	108	34%	73	19%	64%	36%
2018/19	67	25%	25	8%	67%	33%
2019/20	67	23%	41	9%	44%	56%
2020/21	77	29%	21	9%	72%	28%
2021/22	67	26%	24	9%	75%	25%

Table 7 Night Shooting						
	Red		Roe		Both Spp. N/S	
	No.	% Cull	No.	% Cull	% Male	% Female + calves/kids
2012/13	24	8%	40	17%	30%	70%
2013/14	49	20%	70	20%	43%	57%
2014/15	53	18%	83	21%	27%	73%
2015/16	33	10%	66	15%	32%	68%
2016/17	27	11%	46	12%	7%	93%
2017/18	21	7%	29	8%	34%	66%
2018/19	23	9%	50	16%	38%	62%
2019/20	68	23%	126	29%	27%	73%
2020/21	27	1%	54	2%	36%	64%
2021/22	6	2%	37	14%	42%	58%

6. Carcase Weights (clean carcase weight – no gralloch)

Table 8 Red Deer Carcase Weights (kgs)																
	Ballogie Estate				Finzean Estate				BCT (Balfour+Slewdrum)				Birse Estate			
	<i>Stag Aver Wt</i>	<i>Stag Top Wt</i>	<i>Hind Aver Wt</i>	<i>Hind Top Wt.</i>	<i>Stag Aver Wt.</i>	<i>Stag Top Wt.</i>	<i>Hind Aver Wt.</i>	<i>Hind Top Wt.</i>	<i>Stag Aver Wt.</i>	<i>Stag Top Wt.</i>	<i>Hind Aver Wt.</i>	<i>Hind Top Wt.</i>	<i>Stag Aver Wt.</i>	<i>Stag Top Wt.</i>	<i>Hind Aver Wt.</i>	<i>Hind Top Wt.</i>
2012/13	56	90	45	56	51	90	36	50	65	105	51	82	-	-	-	-
2013/14	50	85	41	55	56	90	48	55	73	103	43	68	-	-	-	-
2014/15	54	90	45	60	55	85	38	50	72	118	51	75	-	-	-	-
2015/16	55	98	44	56	55	80	43	60	62	116	51	61	-	-	-	-
2016/17	53	85	45	63	61	100	43	60	56	92	49	65	-	-	-	-
2017/18	54	84	45	63	56	89	44	60	52	78	44	65	49	84	43	62
2018/19	54	85	44	62	53	95	41	58	52	67	40	51	-	-	-	-
2019/20	56	-	43	-	66	100	52	60	72	109	41	52	-	-	-	-
2020/21	53	-	46	-	60	80	46	60	54	94	47	61	54	-	-	-
2021/22	51	-	45	-	58	75	45	60	58	100	46	70	44	-	27	-

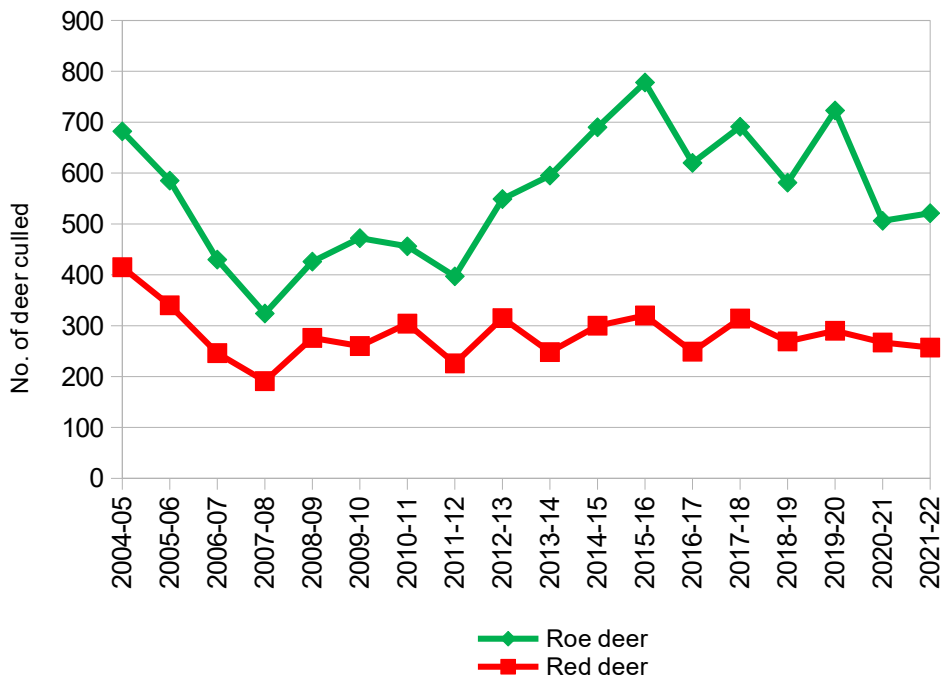
Table 9 Roe Deer Carcase Weights (kgs)																
	Ballogie Estate				Finzean Estate				BCT (Balfour+Slewdrum)				Birse Estate			
	<i>buc k aver wt</i>	<i>buc k top wt</i>	<i>doe aver wt</i>	<i>doe top wt.</i>	<i>buc k aver wt.</i>	<i>buc k top wt.</i>	<i>doe aver wt.</i>	<i>doe top wt.</i>	<i>buc k aver wt.</i>	<i>buc k top wt.</i>	<i>doe aver wt.</i>	<i>doe top wt.</i>	<i>buc k aver wt.</i>	<i>buc k top wt.</i>	<i>doe aver wt.</i>	<i>doe top wt.</i>
2012/13	12	18	11	18	16	20	16	20	13	19	11	20	-	-	-	-
2013/14	13	19	10	16	18	25	11	23	14	19	12	18	-	-	-	-
2014/15	12	17	10	16	14	18	12	20	14	19	12	19	-	-	-	-
2015/16	12	18	12	18	15	22	14	18	15	20	16	19	-	-	-	-
2016/17	13	17	12	16	14	19	15	20	15	19	17	19	-	-	-	-
2017/18	16	17	11	15	14	19	14	18	12	19	14	18	13	17	11	17
2018/19	13	18	12	17	16	21	14	18	14	18	14	18	-	-	-	-
2019/20	13	-	11	-	15	20	15	20	14	19	15	20	-	-	-	-
2020/21	14	-	12	-	19	20	16	20	12	19	13	18	11	-	-	-
2021/22	12	-	13	-	18	20	16	20	13	19	13	19	10	-	11	-

PART TWO TARGETS FOR THE CULL IN 2022-23

7. Overall Cull in 2021-22

- 1 Part One of the Report shows that 257 red and 264 roe deer were shot in the BP DMG area in 2021-22. The overall cull of 521 deer was 49% red and 51% roe. This ratio reflects the DMG's target of culling more roe than red deer.
- 2 The DMG started 2021-22 with cull targets of over 290 red and over 320 roe to hopefully improve the cull of 506 deer in 2020-21, given the apparent numbers of both species locally still.
- 3 Figure 3 below shows that, while the culls of 257 red and 264 roe are below the DMG's targets, the roe deer total is significantly higher than the previous year. While the red total continued the pattern of fluctuating red cull levels around 250-300 deer, the roe total is still quite low compared to recent years.

Figure 3 Total Culls of Red and Roe Deer in BP DMG Area 2004-22



8. RED DEER - Cull Targets 2022-23

8.1 Red Deer Cull 2021-22

- 1 There continued to be significant numbers of red deer in the DMG area during most of the year. There was less damage to crops by red deer in the north of the parish, as well as continuing issues for forestry interests. The large group of 70-80 red deer now seems to have split into smaller groups.
- 2 The total cull of 257 red deer was less than the target of 290. More stags than hinds were shot again (175:82), slightly up on 2020-21.

8.2 Red Deer Cull Targets 2022-23

- 1 The Group remains committed as its main priority, to reducing the local issues resulting from the relatively high numbers of red deer in the DMG area. The main members of the Group are similarly committed to carrying out the red deer culls necessary to achieve this.
- 2 However, the continuing damage to agricultural and forestry interests in parts of the area and the large sizes of the groups of red deer still seen in the area, reflect that the Group needs to continue to make progress in reducing the numbers of red deer locally.
- 3 The DMG members are continuing to see red deer travel from Glentinar into Balloch and Glencatt. It's difficult to know to which extent this is adding to annual recruitment but something to keep on the radar.
- 4 The main members have agreed that they need to cull a minimum of 270 red deer in 2022-23, The main members have allocated that minimum total between themselves as shown in Table 10.

Table 10 Agreed Minimum Red Deer Target Culls 2022-23.

Member	Area (ha)	Total Cull 2021-22	Min. Target 2022-23
<i>Ballogie Estate</i>	<i>5,020</i>	81	85
<i>Finzean Estate</i>	<i>3,978</i>	48	50
<i>Birse Estate</i>	<i>3,029</i>	76	70
<i>BCT</i>	<i>936</i>	33	65
<i>Total</i>		238	270

- 5 The main members intend to shoot more than the minimum if they can and, with culls that might be taken on Balfour Estate and the Shannel on top of that, the aim is that a cull of 270 should be achieved. In 2021-22, Balfour Estate and the Shannel shot 19 red deer or 7% of the DMG total.

9. ROE DEER - Cull Targets 2022-23

9.1 Roe Deer Cull 2021-22

- 1 The 2021-22 roe cull of 264 was lower than the DMG's target of 320 or more. However, the cull maintained the higher level of roe culls in recent years.
- 2 During the last five years 2017/18-2021/22, the DMG has shot 1,625 roe deer. This is about the same as in the previous five years. However, roe deer continue to be relatively abundant in the DMG area.
- 3 While more does than bucks were shot in 2021-22, this is the same as in the previous year.

9.2 Roe Deer Cull Targets 2022-23

- 1 The main members of the DMG each have a strong, local, economic self-interest in managing roe deer effectively in the DMG area. There are also important local and environmental and social reasons for achieving this.
- 2 The main members recognise that there are still relatively high numbers of roe deer in much of the DMG area and a continuing need for higher overall roe culls to try to reduce the numbers to more sustainable levels.
- 3 The main members have agreed that they need to cull over 320 roe deer in 2022-23, and have allocated that minimum total between themselves as shown in Table 11.
- 4 The main members intend to shoot more than the minimum if they can and, with culls that might be taken on Balfour Estate and the Shannel on top of that, the aim is that the cull should be nearer 350. In 2021-22, Balfour Estate and the Shannel shot 7 roe deer or 3% of the DMG total.
- 5 There is already a significant roe cull in the 7 DMUs in the north west part of the DMG, where there is a particular focus on tackling the number of red deer. Members in that area will aim to maintain or improve the current level of the roe culls there.

Table 11 Agreed Minimum Roe Deer Target Culls 2022-23.

Member	Area (ha)	Total Cull 2021-22	Min. Target 2022-23
<i>Ballogie Estate</i>	<i>5,020</i>	<i>77</i>	<i>100</i>
<i>Finzean Estate</i>	<i>3,978</i>	<i>30</i>	<i>70</i>
<i>Birse Estate</i>	<i>3,029</i>	<i>60</i>	<i>50</i>
<i>BCT</i>	<i>936</i>	<i>90</i>	<i>100</i>
<i>Total</i>		<i>257</i>	<i>320</i>

10. OVERALL CULL TARGETS 2022-23

- 1 Both species continue to thrive in the favourable habitat of the DMG area and the main members recognise that higher numbers of both species need to be culled to reduce the current local populations to lower, sustainable levels.
- 2 At the start of the 2022-23 season, the main members have agreed the minimum cull targets below, with the aspiration that the red deer cull should be 270 or more and the roe cull 320 or more in 2022-23

Table 12 Agreed Minimum Red and Roe Deer Target Culls 2022-23

Member	Area (ha)	Min. Red 2022-23	Min. Roe 2022-23	Min. Target 2022-23
<i>Ballogie</i>	<i>5,020</i>	85	100	185
<i>Finzean</i>	<i>3,978</i>	50	70	120
<i>Birse</i>	<i>3,029</i>	70	50	120
<i>BCT</i>	<i>936</i>	65	100	165
<i>Total</i>		270	320	610

- 5 The cull of 257 red and 264 roe in 2021-22 represents a substantial amount of time and physical effort by the stalkers involved in carrying out the cull. A key challenge for the deer managers is to ensure that there are human resources available in terms of stalkers and stalker outings, to continue on those cull levels in 2022-23.
-